

**INTRODUCING OUR 300 PLATE CAPACITY ANAEROBIC  
CHAMBER DELIVERING OPTIMUM PRODUCTIVITY IN A  
COMPACT SPACE**



 **BACTRON 300**  
ANAEROBIC CHAMBER



## BACTRONS CREATE AN ENVIRONMENT WITH AN ABSENCE OF OXYGEN WHICH IS OBLIGATE, AND STRICT FOR YOUR ANAEROBIC ORGANISMS

*Our BACTRON300 Economical Anaerobic Chamber with a 16.0 cu. ft. workspace with an inner accessible incubator that creates a 300-plate capacity to deliver optimum productivity in a compact design for nominal to vaster research lab spaces. Our BACTRON Anaerobic Chambers have an airtight construction of stainless steel and rigid acrylic glass for unobstructed vision and integrity. The chamber handcuffs form a comfortable seal around the operator's arms that enables complete manipulation of plates and specimens inside the working chamber forming a work user-friendly in most applications. When sitting undisturbed and unopened at a steady state, the BACTRON Anaerobic Chamber typically rests oxygen-free and anaerobic. Our Anaerobic Chambers meet EN61010, UL61010, and Can/CSA61010 standards.*



### Our BACTRON300 Anaerobic Chamber features:

- **New Side Access Panel Standard**

New right side access panel opening 20"x 17.5" for easy access, especially to set up lab equipment in the chamber.

- **New Side Access Panel With Single Plate Entry Door Optional Accessory**

New right side access panel opening 20.75"x 19.25" for easy access, especially to set up lab equipment in the chamber and integrated single plate entry opening optional accessory.

- **Low Gas Supply Alarm**

Audible and visual notification via the control panel when the AMG gas supply is low. Also, operators can change the cylinder while the chamber atmosphere stays anaerobic.

- **Auto-Sleeve Cycle**

No more guesswork or operator variation; automated ultra-efficient sleeve cycles with one press of the foot switch.

- **Integrated Internal Regulators**

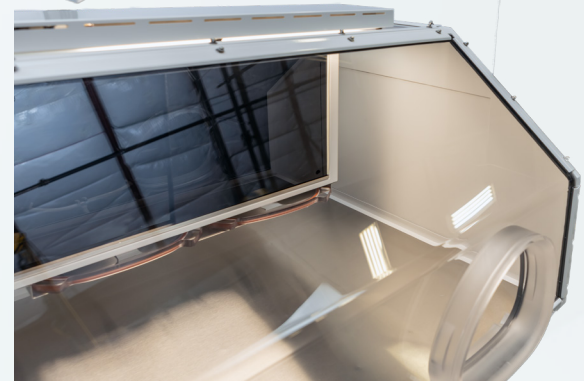
Ensure consistent and reproducible gas delivery to all chamber processes plus protecting all the internal components from incorrect cylinder settings.

- **User Adjustable Airlock Cycling**

Customize your airlock cycle to fit your time and budget allowing operator customization from 3, 4, or 5 auto-cycle iterations.

- **Auto-Commissioning Cycle**

The single-button auto-commissioning cycle automatically creates an anaerobic atmosphere in 5 hours; press the button and walk away while the chamber becomes anaerobic.







## Applications:

- » Clinical Microbiology
- » Microbiome Studies
- » Susceptibility Assays
- » Fermentation and Spoilage Studies
- » Food Microbiology
- » Bio-Energy Research
- » Environmental Microbiology
- » Anaerobic Bacteriology

### Accessories

Item Description	Part Number
Handheld Oxygen Sensor	9902223
Activated Carbon Media (2lbs/0.9kgs)	1060500
Petri Plate Racks (2 x 11)	5110729
Leak Detector	4600501
UV Viewing Lamp	9490507
Nitrogen Regulator Kit	9740567
Nitrile Cuffs	3600525(S) 3600526(M) 3600527(L)
Activated Carbon, Volatile Compounds Scrubber Fan	9490578 (110V) 9490581 (220V)
BACTRON300 Rolling Stand (W x D x H) 61.5" x 30" x 30"/1560 x 762 x 762 mm	BACSTAND-MD22
AMG REGULATOR ASSY 3/16ID TUBING / A HIGHER-PRESSURE GAUGE W/WIDE TUBING	9740560
ACCESS PANEL COVER WITH SINGLE PLATE DOOR	9991035
Stereo Microscope w/ Accessories	Contact <a href="mailto:sales@sheldonmfg.com">sales@sheldonmfg.com</a>
Anaerobic Chamber Start-Up Kit*	9490511
Latex Cuffs	3600500(S) 3600502(L)
Benzalkonium Chloride Solution Chamber Cleaner	1060501
Anaerobic Indicator Strips	1060553
Activated Charcoal Media	1060500
Airlock Gasket (12 x 12)	3450507
Acrylic Glass Cleaner	1060503
Acrylic Glass Scratch Remover	1060504
O-Ring For Sleeve Cuff	6000504

### Unit Specifications

BACTRON300	Part ID: BAA30022/ [BAA30022-E]*
Unit Weight	304lbs/138kg
Shipping Weight	549lbs/249kg
Workspace Chamber Volume	16.0 cu.ft. /453L
Workspace Chamber Dimensions W x D x H	42.5" x 28.9" x 25.0" 1059 x 734 x 635mm
Exterior Dimensions W x D x H	62.3" x 32.0" x 27.6" 1583 x 813 x 701mm
Airlock Dimensions W x D x Diagonal	16.0" x 10.0" x 11.5" 406 x 254 x 292mm
Side Access Panel Dimensions W x D	20.0" x 17.5" 508 x 444.5mm
Airlock Volume	1.29 cu.ft. /36.5L
Airlock Plate Capacity	216
Incubator Specifications	
Plate Capacity	300
Workspace Incubator Volume	1.4 cu.ft. /39.6L
Workspace Incubator Dimensions W x D x H	27.5" x 8.5" x 13.5" 699 x 216 x 343mm
Temperature Range	Ambient + 5° to 70° C
Temperature Uniformity	+/- 1.0° C @ 37°C
Power	
AC Voltage	110-120/220-240
Amperage	9/6
Frequency	50-60Hz

\*Denotes 220v unit

 <https://www.sheldonmanufacturing.com>

 [sales@sheldonmfg.com](mailto:sales@sheldonmfg.com)

 **Manufactured in Cornelius, Oregon USA**



USER MANUAL:

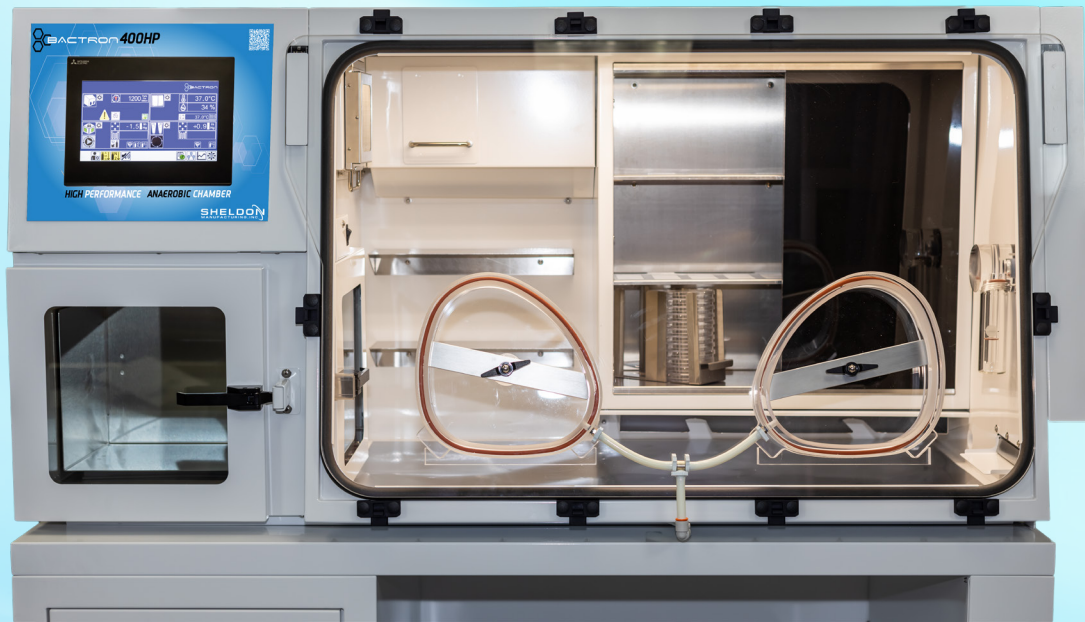
FOLLOW US ON:



**SHELDON**  
MANUFACTURING, INC.



INTRODUCING OUR **NEW** 400 PLATE CAPACITY ANAEROBIC CHAMBER WITH CAPACITIVE 10.1" TOUCHSCREEN CONTROLLER AND INNER CHAMBER **HEPA** FILTERATION SYSTEM



 **BACTRON 400HP**  
HIGH PERFORMANCE ANAEROBIC CHAMBER





## **BACTRONS CREATE AN ENVIRONMENT WITH AN ABSENCE OF OXYGEN WHICH IS OBLIGATE, AND STRICT FOR YOUR ANAEROBIC ORGANISMS**

*Our new redesigned Bactron400HP anaerobic chamber with a spacious new 19.8 cu. ft. workspace and new inner workstation incubator allow the new BACTRON400HP to deliver more capacity without compromising the compact design for any research lab space. Researchers will have total authority over their work area with plentiful bench space and a sizable 10.1" color capacitive touchscreen controller. The instrument results are displayed on the large, easy-to-read LCD screen that can function with or without gloves. Onscreen symbols inform the user of real-time functions of working modes, alarms, and anaerobic status. Also, our engineers have upgraded the unit's inner chamber with a sizable HEPA filtration ecosystem that effectively ensures micro-particle arrest in most applications. Our BACTRON Anaerobic Chambers have an airtight construction of stainless steel and rigid acrylic glass for unobstructed vision and integrity. The chamber handcuffs form a comfortable seal around the operator's arms that enables complete manipulation of plates and specimens inside the working chamber forming a work user-friendly in most applications. When sitting undisturbed and unopened at a steady state, the BACTRON Anaerobic Chamber typically rests oxygen-free and anaerobic. Our Anaerobic Chambers meet EN61010, UL61010, and Can/CSA61010 standards.*

### **Our BACTRON400HP Anaerobic Chamber features:**

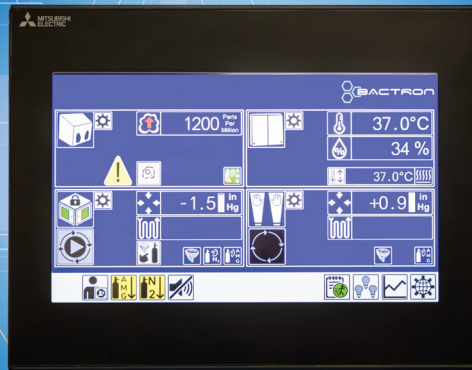
- **NEW** HEPA filtration provides continuous treatment of workspace and incubator to ISO Class 3 standards.
- **NEW** O<sub>2</sub> sensor for the most accurate anaerobic performance.
- **NEW** Relative Humidity (RH) sensor for the incubator.
- **NEW** Hinged Front Flange for easy loading of lab devices, supplies, and appliances; provides full access to all areas of the chamber and incubator for cleaning.
- Standard KF40 Expansion Port for cable passthrough
- **NEW** 10.1 inch (26cm) Hi-Res multi-color touch screen control:
  - Users can display up to 4 simultaneous data or performance readings.
  - Complete data logging for multiple performance levels with SD card.
  - Password protected security settings.
- LED internal chamber adjustable brightness illumination. **ENERGY EFFICIENCY**
- User-programmable Airlock for up to 9 purge cycles.
- Low Gas Supply Alarm audible and visual notification via the control panel when the AMG gas supply is low.
- Auto-Sleeve Cycle no more guesswork or operator variation; automated ultra-efficient sleeve cycles with one press of the foot switch.
- Integrated Internal Regulators ensure consistent and reproducible gas delivery to all chamber processes plus protecting all the internal components from incorrect cylinder settings.
- User Adjustable Airlock Cycling customize your airlock cycle to fit your time and budget allowing operator customization.
- Auto-Commissioning Cycle the single-button auto-commissioning cycle automatically creates an anaerobic atmosphere in 6 hours; press the button and walk away while the chamber becomes anaerobic.

FOLLOW US ON:



**SHELDON**  
MANUFACTURING, INC.

**BACTRON 400HP**



**HIGH PERFORMANCE ANAEROBIC CHAMBER**

**SHELDON**  
MANUFACTURING, INC.



## Applications:

- Clinical Microbiology
- Microbiome Studies
- Susceptibility Assays
- Fermentation and Spoilage Studies
- Food Microbiology
- Bio-Energy Research
- Environmental Microbiology
- Anaerobic Bacteriology



### BACTRON 400HP

<b>Exterior Dimensions (w x d x h)</b>	<b>64.0 x 32.4 x 32.6 in</b> <b>1625.6 x 822.96 x 32.6 mm</b>
<b>Workspace Chamber Dimensions (w x d x h)</b>	<b>43.4 x 28.0 x 30.0 in</b> <b>1102.36 x 711.2 x 762 mm</b>
<b>Workspace Chamber Volume</b>	<b>19.8 cu. ft</b> <b>560L</b>
<b>Airlock (w x d x diagonal)</b>	<b>16 x 10 x 11.5 in</b> <b>406.4 x 254 x 292.1 mm</b>
<b>Airlock Volume</b>	<b>0.9 cu. ft</b> <b>26 L</b>
<b>Incubator Dimensions (w x d x h)</b>	<b>23.6 x 8.6 x 21.9 in</b> <b>599.44 x 218.44 x 556.26 mm</b>
<b>Incubator Volume</b>	<b>1.6 cu. ft.</b> <b>45.3 L</b>
<b>Unit Weight</b>	<b>335 lb</b>

### Incubator Performance

<b>Temperature Range</b>	<b>Ambient + 5°C to 70°C</b>
<b>Temperature Uniformity</b>	<b>(+/-) 0.2°C @ 37°C</b>
<b>Incubator Capacity</b>	<b>400 Plates</b>
<b>Airlock Capacity</b>	<b>216 Plates</b>



<https://www.sheldonmanufacturing.com>



[sales@sheldonmfg.com](mailto:sales@sheldonmfg.com)



[Manufactured in Cornelius, Oregon USA](#)



FOLLOW US ON:

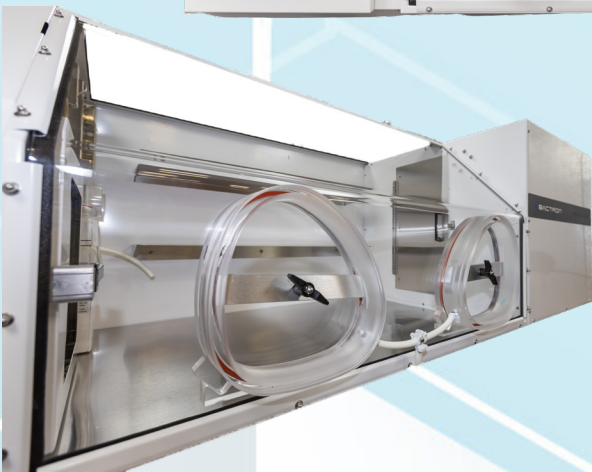


**SHELDON**  
MANUFACTURING, INC.





**INTRODUCING OUR 600 PLATE CAPACITY ANAEROBIC CHAMBER DESIGNED FOR HIGH VOLUME SAMPLES**



 **BACTRON 600**  
ANAEROBIC CHAMBER

FOLLOW US ON:    



# BACTRON 600 ANAEROBIC CHAMBER

*The BACTRON600 Anaerobic Chamber permits volume handling of anaerobic cultures with maximum operator comfort with 16.0 cu. ft. of workspace up to 300-plate with generous stainless-steel shelving and an additional 300-plate capacity side storage incubator. In combination with workspace capacity and side storage incubator capacity, which is designed for high-volume research requiring nominal bench space than expected for the 600-plate volume plus anaerobic performance features. Our BACTRON Anaerobic Chambers have an airtight construction of stainless steel and rigid acrylic glass for unobstructed vision and integrity. The chamber handcuffs form a comfortable seal around the operator's arms that enables complete manipulation of plates and specimens inside the working chamber forming a work user-friendly in most applications. When sitting undisturbed and unopened at a steady state, the BACTRON Anaerobic Chamber typically rests oxygen-free and anaerobic. Our Anaerobic Chambers meet EN61010, UL61010, and Can/CSA61010 standards.*

## **BACTRONS CREATE AN ENVIRONMENT WITH AN ABSENCE OF OXYGEN WHICH IS OBLIGATE, AND STRICT FOR YOUR ANAEROBIC ORGANISMS**

### **Our BACTRON600 Anaerobic Chamber features:**

- **Low Gas Supply Alarm**

Audible and visual notification via the control panel when the AMG gas supply is low. Also, operators can change the cylinder while the chamber atmosphere stays anaerobic.

- **Auto-Sleeve Cycle**

No more guesswork or operator variation; automated ultra-efficient sleeve cycles with one press of the foot switch.

- **Integrated Internal Regulators**

Ensure consistent and reproducible gas delivery to all chamber processes plus protecting all the internal

components from incorrect cylinder settings.

- **User Adjustable Airlock Cycling**

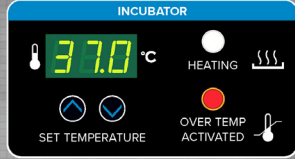
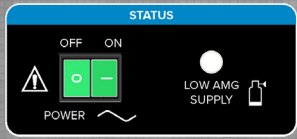
Customize your airlock cycle to fit your time and budget allowing operator customization from 3, 4, or 5 auto-cycle iterations.

- **Auto-Commissioning Cycle**

The single-button auto-commissioning cycle automatically creates an anaerobic atmosphere in 5 hours; press the button and walk away while the chamber becomes anaerobic.







## Applications:

- » Clinical Microbiology
- » Microbiome Studies
- » Susceptibility Assays
- » Fermentation and Spoilage Studies
- » Food Microbiology
- » Bio-Energy Research
- » Environmental Microbiology
- » Anaerobic Bacteriology

### Accessories

### Unit Specifications

Item Description	Part Number
Handheld Oxygen Sensor	9902223
Activated Carbon Media (2lbs/0.9kgs)	1060500
Petri Plate Racks (2 x 11)	5110729
Leak Detector	4600501
UV Viewing Lamp	9490507
Nitrogen Regulator Kit	9740567
Nitrile Cuffs	3600525(S) 3600526(M) 3600527(L)
Activated Carbon, Volatile Compounds Scrubber Fan	9490578 (110V) 9490581 (220V)
BACTRON600 Rolling Stand (W x D x H) 88.5" x 30" x 29"/2250 x 762 x 762 mm	BACSTAND-LG22
AMG REGULATOR ASSY 3/16ID TUBING / A HIGHER-PRESSURE GAUGE W/WIDE TUBING	9740560
Stereo Microscope w/ Accessories	Contact <a href="mailto:sales@sheldonmfg.com">sales@sheldonmfg.com</a>
Anaerobic Chamber Start-Up Kit*	9490511
Latex Cuffs	3600500(S) 3600502(L)
Benzalkonium Chloride Solution Chamber Cleaner	1060501
Anaerobic Indicator Strips	1060553
Activated Charcoal Media	1060500
Airlock Gasket (12 x 12)	3450507
Acrylic Glass Cleaner	1060503
Acrylic Glass Scratch Remover	1060504
O-Ring For Sleeve Cuff	6000504

BACTRON600		Part ID: BAA60022/ [BAA60022-E]*
Unit Weight	412lbs/187kg	
Shipping Weight	657lbs/298kg	
Workspace Chamber Volume	16.0 cu.ft. /453L	
Workspace Chamber Dimensions W x D x H	42.5" x 28.9" x 25.0" 1059 x 734 x 635mm	
Exterior Dimensions W x D x H	88.5" x 32.5" x 27.6" 2248 x 826 x 701mm	
Airlock Dimensions W x D x Diagonal	16.0" x 10.0" x 11.5" 406 x 254 x 292mm	
Airlock Volume	1.29 cu.ft. /36.5L	
Airlock Plate Capacity	216	
Incubator Specifications		
Plate Capacity	600	
Workspace Incubator Volume	4.6 cu.ft. /130L	
Side Incubator Dimensions	23.5" x 18.5" 597 x 470mm	
Temperature Range	Ambient + 5° to 70° C	
Temperature Uniformity	+/- 1.0° C @ 37°C	
Side Incubator Uniformity	+/- 1.0° C @ 37°C	
Power		
AC Voltage	110-120/220-240	
Amperage	11/8	
Frequency	50-60Hz	

\*Denotes 220v unit



<https://www.sheldonmanufacturing.com>



[sales@sheldonmfg.com](mailto:sales@sheldonmfg.com)



Manufactured in Cornelius, Oregon USA



USER MANUAL:

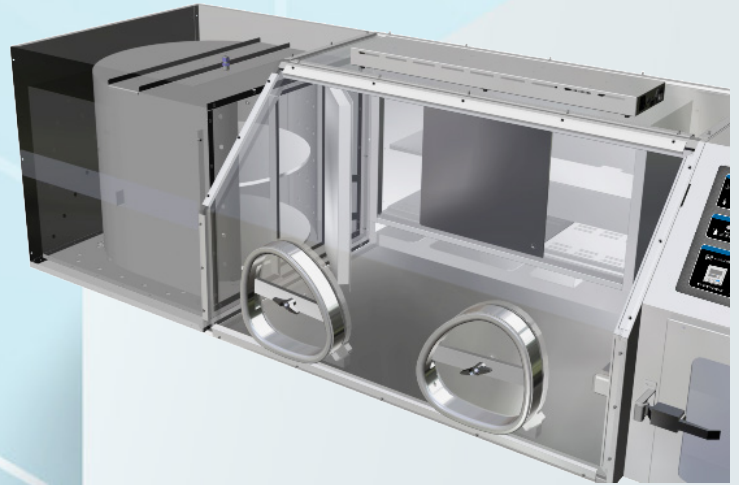
FOLLOW US ON:



# SHELDON

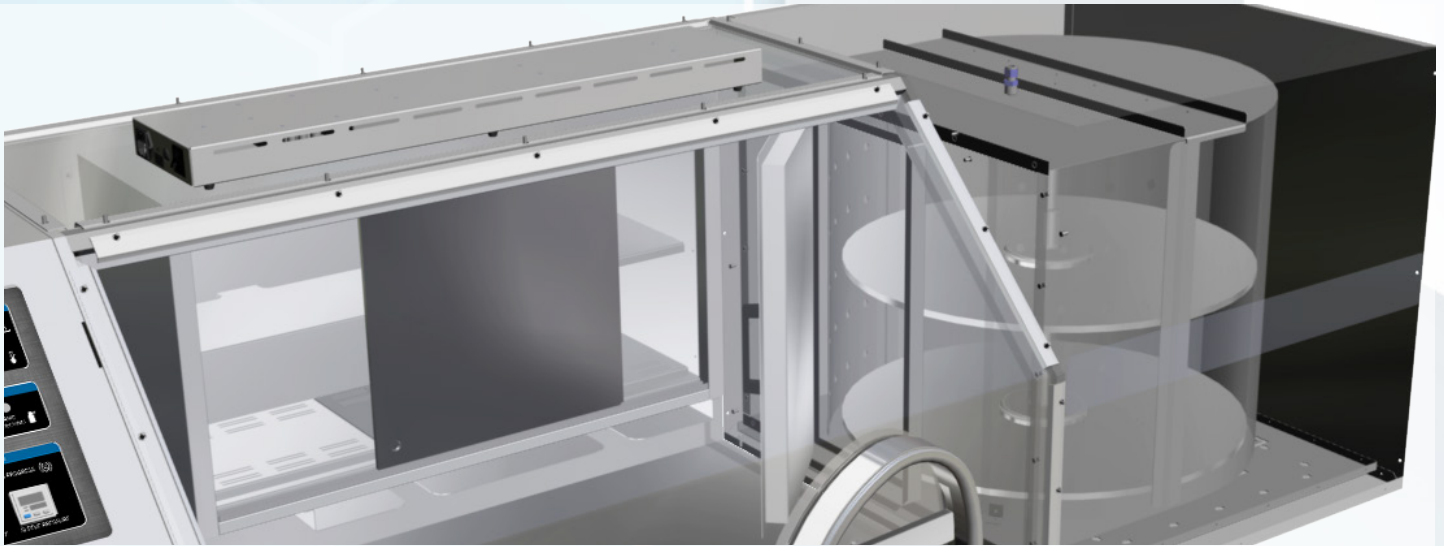
MANUFACTURING.INC

**INTRODUCING OUR 900 PLATE LARGE CAPACITY  
ANAEROBIC CHAMBER DELIVERING OPTIMAL  
PRODUCTIVITY**



 **BACTRON 900**  
**ANAEROBIC CHAMBER**





*The BACTRON900 Anaerobic Chambers affirms the same performance as the BACTRON300 and BACTRON600 with an inner workstation chamber incubator and a side storage incubator. In combination with a 16.0 cu. ft. workspace and two independent incubators totaling 900-plate real estate capacity, BACTRON900 is guaranteed to satisfy even the most demanding anaerobic research applications and situations. Our BACTRON Anaerobic Chambers have an airtight construction of stainless steel and rigid acrylic glass for unobstructed vision and integrity. The chamber handcuffs form a comfortable seal around the operator's arms that enables complete manipulation of plates and specimens inside the working chamber forming a work user-friendly in most applications. When sitting undisturbed and unopened at a steady state, the BACTRON Anaerobic Chamber typically rests oxygen-free and anaerobic. Our Anaerobic Chambers meet EN61010, UL61010, and Can/CSA61010 standards.*

## **BACTRONS CREATE AN ENVIRONMENT WITH AN ABSENCE OF OXYGEN WHICH IS OBLIGATE, AND STRICT FOR YOUR ANAEROBIC ORGANISMS**

### **Our BACTRON600 Anaerobic Chamber features:**

- **Low Gas Supply Alarm**

Audible and visual notification via the control panel when the AMG gas supply is low. Also, operators can change the cylinder while the chamber atmosphere stays anaerobic.

- **Auto-Sleeve Cycle**

No more guesswork or operator variation; automated ultra-efficient sleeve cycles with one press of the foot switch.

- **Integrated Internal Regulators**

Ensure consistent and reproducible gas delivery to all chamber processes plus protecting all the internal

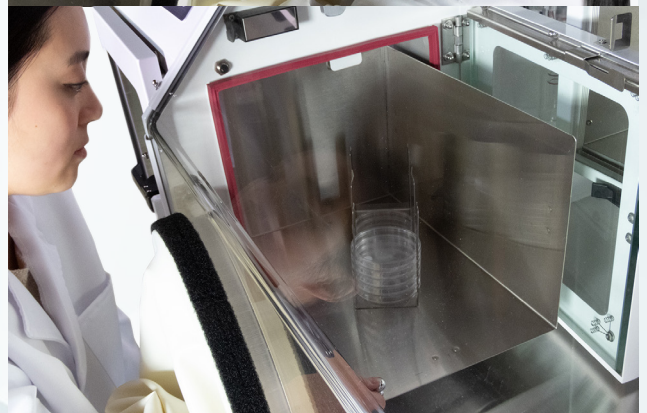
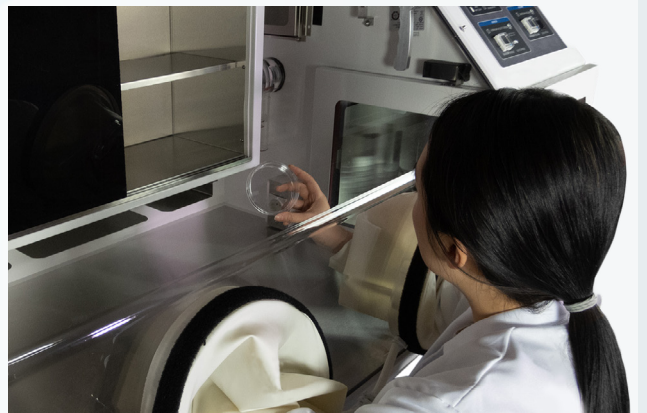
components from incorrect cylinder settings.

- **User Adjustable Airlock Cycling**

Customize your airlock cycle to fit your time and budget allowing operator customization from 3, 4, or 5 auto-cycle iterations.

- **Auto-Commissioning Cycle**

The single-button auto-commissioning cycle automatically creates an anaerobic atmosphere in 8 hours; press the button and walk away while the chamber becomes anaerobic.



## Applications:

- » Clinical Microbiology
- » Microbiome Studies
- » Susceptibility Assays
- » Fermentation and Spoilage Studies
- » Food Microbiology
- » Bio-Energy Research
- » Environmental Microbiology
- » Anaerobic Bacteriology



Accessories		Unit Specifications	
Item Description	Part Number	BACTRON900	Part ID: BAA90022/ [BAA90022-E]*
Handheld Oxygen Sensor	9902223	Unit Weight	473lbs/215kg
Activated Carbon Media (2lbs/0.9kgs)	1060500	Shipping Weight	795lbs/361kg
Petri Plate Racks (2 x 11)	5110729	Workspace Chamber Volume	16.0 cu.ft. /453L
Leak Detector	4600501	Workspace Chamber Dimensions W x D x H	42.5" x 28.9" x 25.0" 1059 x 734 x 635mm
UV Viewing Lamp	9490507	Exterior Dimensions W x D x H	88.5" x 32.0" x 33.6" 2248 x 813 x 854mm
Nitrogen Regulator Kit	9740567	Airlock Dimensions W x D x Diagonal	16.0" x 10.0" x 11.5" 406 x 254 x 292mm
Nitrile Cuffs	3600525(S) 3600526(M) 3600527(L)	Side Access Panel Dimensions W x D	20.0" x 17.5" 508 x 444.5mm
Activated Carbon, Volatile Compounds Scrubber Fan	9490578 (110V) 9490581 (220V)	Airlock Volume	1.29 cu.ft. /36.5L
BACTRON900 Rolling Stand (W x D x H) 88.5" x 30" x 29"/2250 x 762 x 762 mm	BACSTAND-LG22	Airlock Plate Capacity	216
AMG REGULATOR ASSY 3/16ID TUBING / A HIGHER-PRESSURE GAUGE W/WIDE TUBING	9740560	<b>Incubator Specifications</b>	
Stereo Microscope w/ Accessories	Contact <a href="mailto:sales@sheldonmfg.com">sales@sheldonmfg.com</a>	Plate Capacity	900
Anaerobic Chamber Start-Up Kit*	9490511	Workspace Incubator Volume	1.4 cu.ft. /39.6L
Latex Cuffs	3600500(S) 3600502(L)	Side Incubator Volume	4.6 cu.ft. /130L
Benzalkonium Chloride Solution Chamber Cleaner	1060501	Workspace Incubator Dimensions W x D x H	27.5" x 8.5" x 13.5" 699 x 216 x 343mm
Anaerobic Indicator Strips	1060553	Side Incubator Dimensions	23.5" x 18.5" 597 x 470mm
Activated Charcoal Media	1060500	Temperature Range	Ambient + 5° to 70° C
Airlock Gasket (12 x 12)	3450507	Temperature Uniformity	+/- 1.0° C @ 37°C
Acrylic Glass Cleaner	1060503	Side Incubator Uniformity	+/- 1.0° C @ 37°C
Acrylic Glass Scratch Remover	1060504	<b>Power</b>	
O-Ring For Sleeve Cuff	6000504	AC Voltage	110-120/220-240
		Amperage	14/10
		Frequency	50-60Hz

\*Denotes 220v unit



<https://www.sheldonmanufacturing.com>



[sales@sheldonmfg.com](mailto:sales@sheldonmfg.com)



Manufactured in Cornelius, Oregon USA



USER MANUAL:

FOLLOW US ON:



**SHELDON**  
MANUFACTURING, INC





# BACTRON 900

ANAEROBIC CHAMBER

**BUILT WITH TWO INCUBATORS FOR HIGH THROUGHPUT WORKFLOWS**

