

SMI12-2 Microbiological Incubator



Model Name / Order Part ID	SMI12-2/SLM1222-E
Capacity	11.7 cu.ft. (332 liters)
Interior Dimensions (W x D x H)	19.5" x 20.0" x 26.0" 495 x 508 x 660 mm
Exterior Dimensions (W x D x H)	25.3" x 27.3" x 76.0" 643 x 693 x 1930 mm
Unit Weight	316 lb (143.3 kg)
Shipping Weight	372 lb (169 kg)
Shelves	6 standard, 12 maximum
Maximum Weight Per Shelf	35 lb (15.9 kg)
Permitted Total Load	210 lb (95.3 kg)
Standard Door Gasket	Vinyl
Access Port	1
Controls	Digital
Warranty	2 Year Warranty
Interior Construction	430 Stainless Steel
Exterior Construction	Painted Cold Roll Steel
Vertical Clearance	2" (51 mm)
Wall Clearance, Each Side	4" (102 mm)
Wall Clearance, Rear	4" (102 mm)



Electrical

Electrical Supply /Hz, AC, 1Ø	50/60 Hz, 220-240 VAC, 8.0 Amps
Nominal Power (watts @ 37°C)	300 watts
Plug Supplied	EU1-16P
Energy Consumption (kWh/day) - At 37°C	7.0

Temperature Range Ambient +8°C to 70°C

Recovery after Door Opening (30 sec.) - Minutes to 37°C	5.0
Recovery after Door Opening (60 sec.) - Minutes to 37°C	6.0

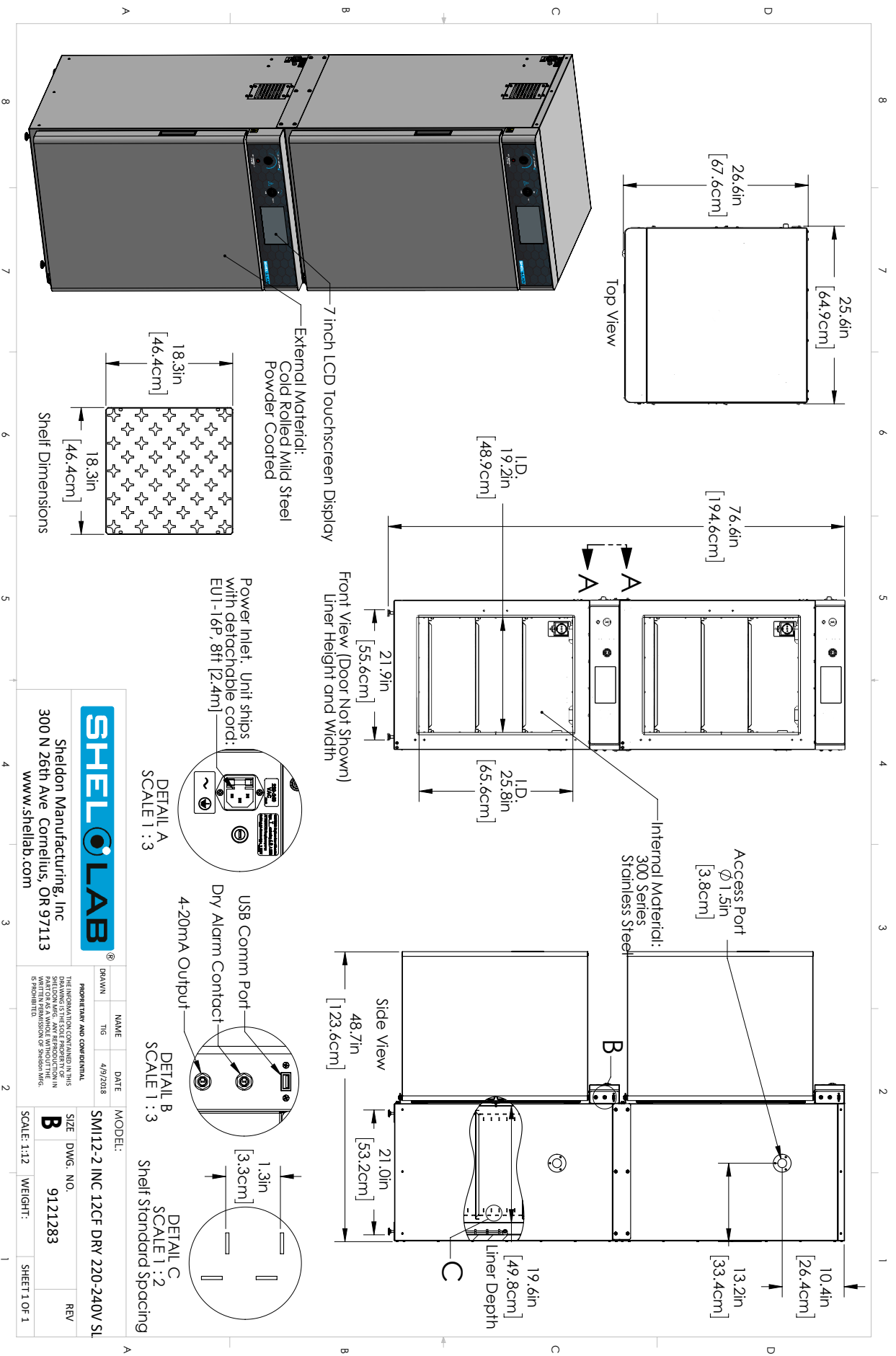
Temperature Uniformity

At 37°C	0.5
---------	-----



Learn More About Sheldon Manufacturing
sales@sheldonmfg.com
sheldonmanufacturing.com
 (503) 640-3000





SHELL LAB		Sheldon Manufacturing, Inc	
300 N 26th Ave		Cornelius, OR 97113	
www.shellab.com			
NAME	DATE	MODEL	REV
TIG	4/9/2018	SM112-2 INC 12CF DRY 220-240V SL	
SIZE	DWG. NO.	SCALE	WEIGHT
B	9121283	1:12	
SHEET 1 OF 1			

PROPRIETARY AND CONFIDENTIAL
 THE INFORMATION CONTAINED IN THIS DRAWING IS THE SOLE PROPERTY OF SHELDON MANUFACTURING, INC. AND IS TO BE USED ONLY FOR THE PARTS AND ASSEMBLY THEREOF WITHOUT THE WRITTEN PERMISSION OF SHELDON MFG. © 2018 SHELDON MFG.